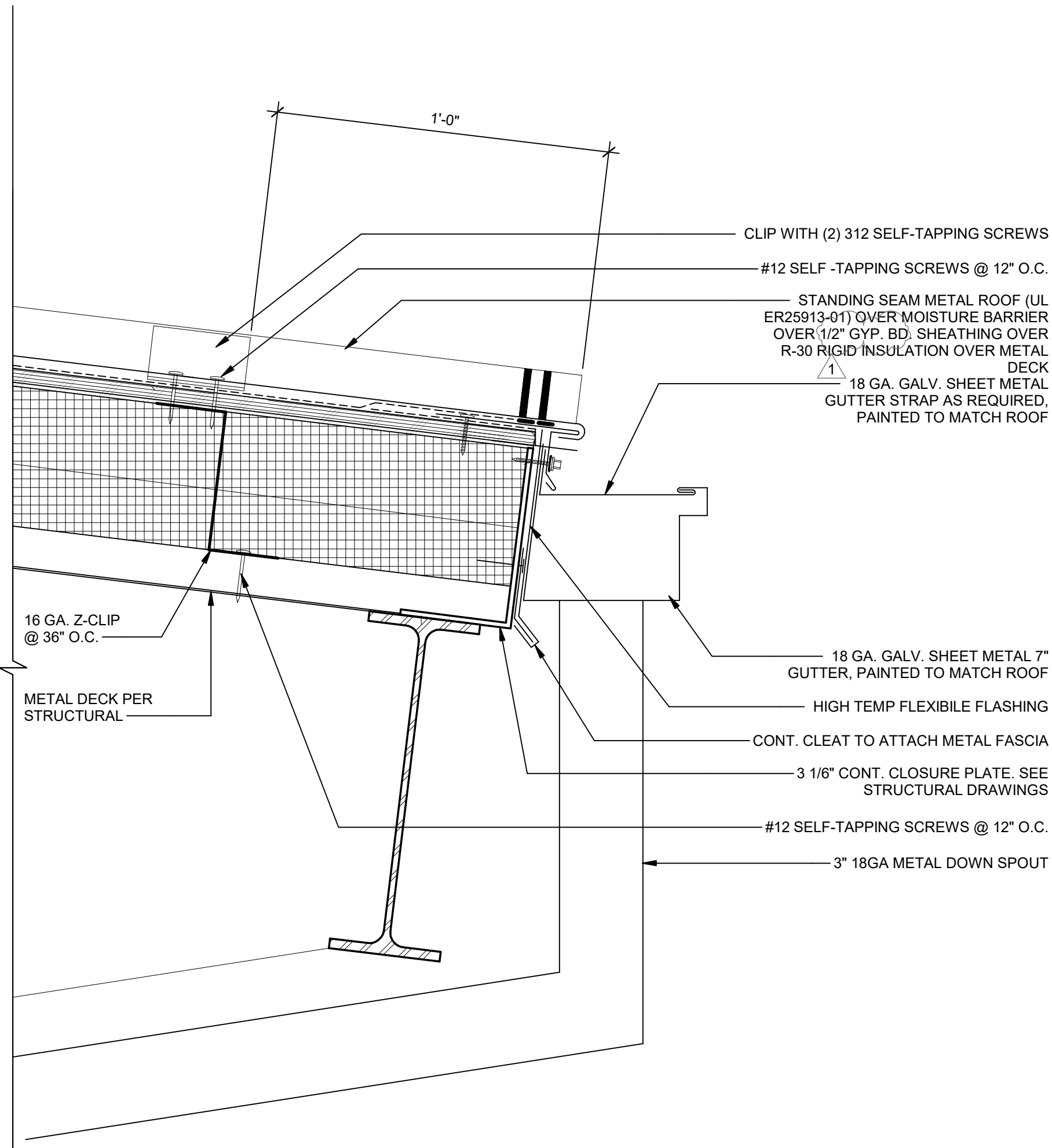
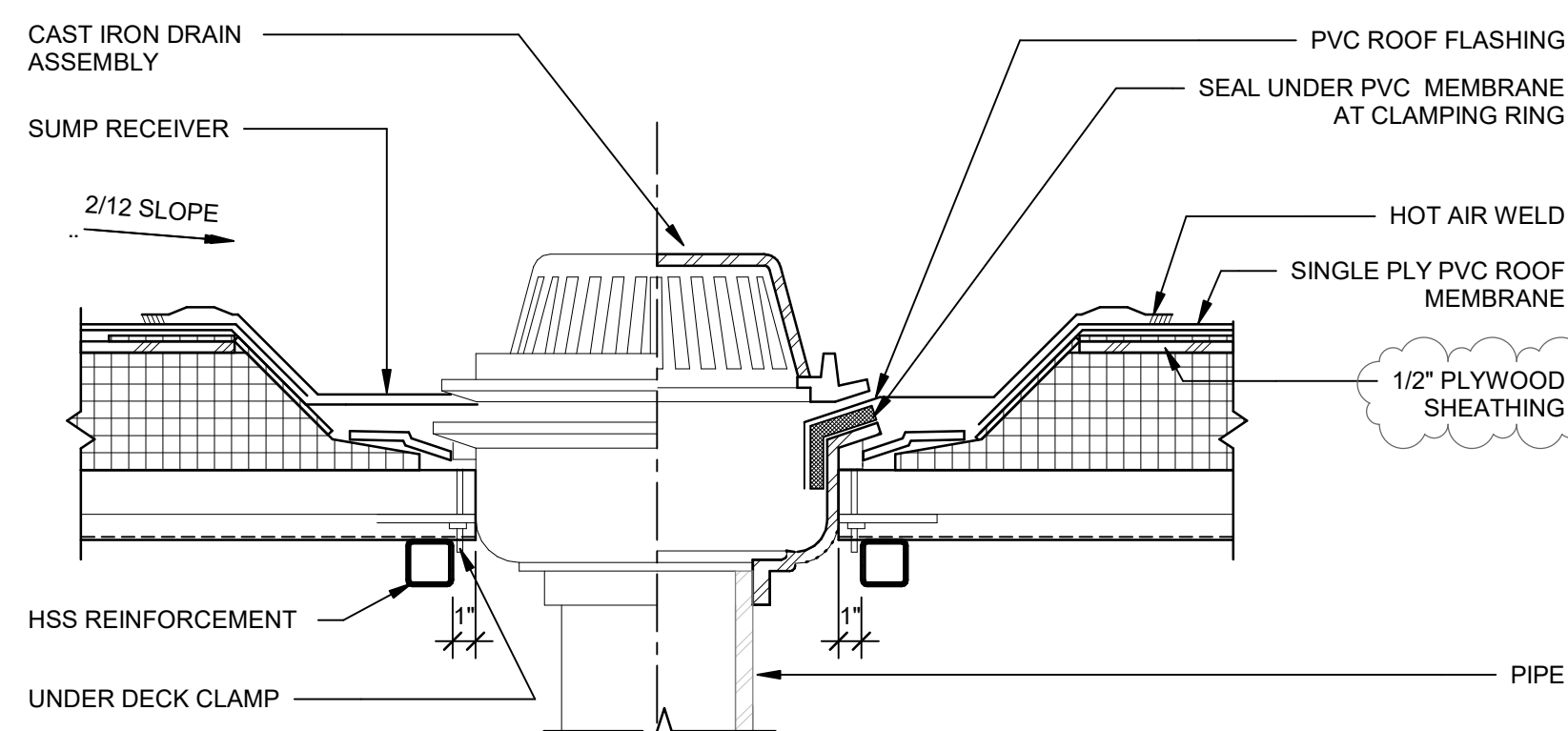


9 TYPICAL ROOF EAVE DETAIL W/ GUTTER  
Scale: 3" = 1'-0"

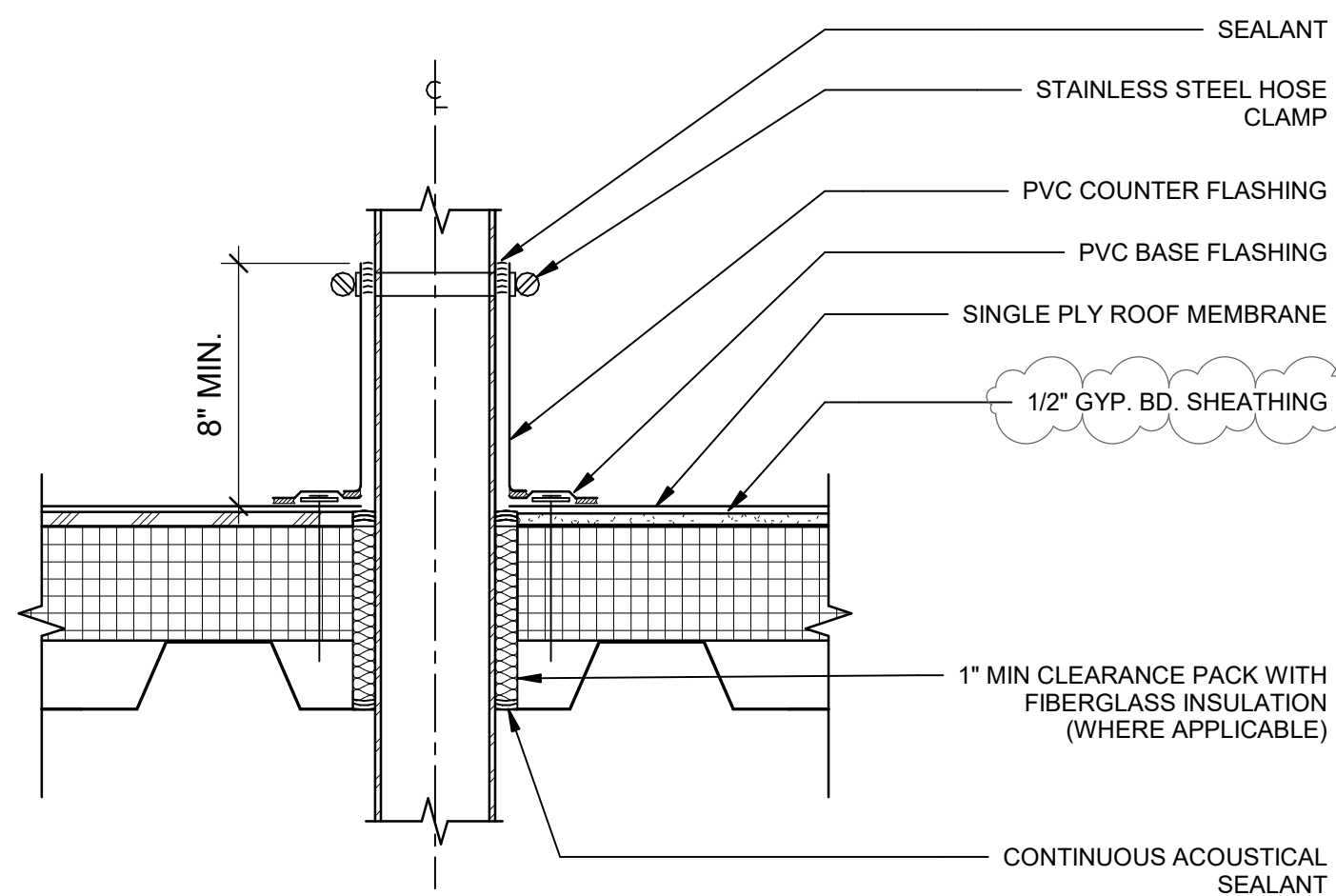


10 OVERFLOW SCUPPER PLAN DETAIL  
Scale: 1 1/2" = 1'-0"

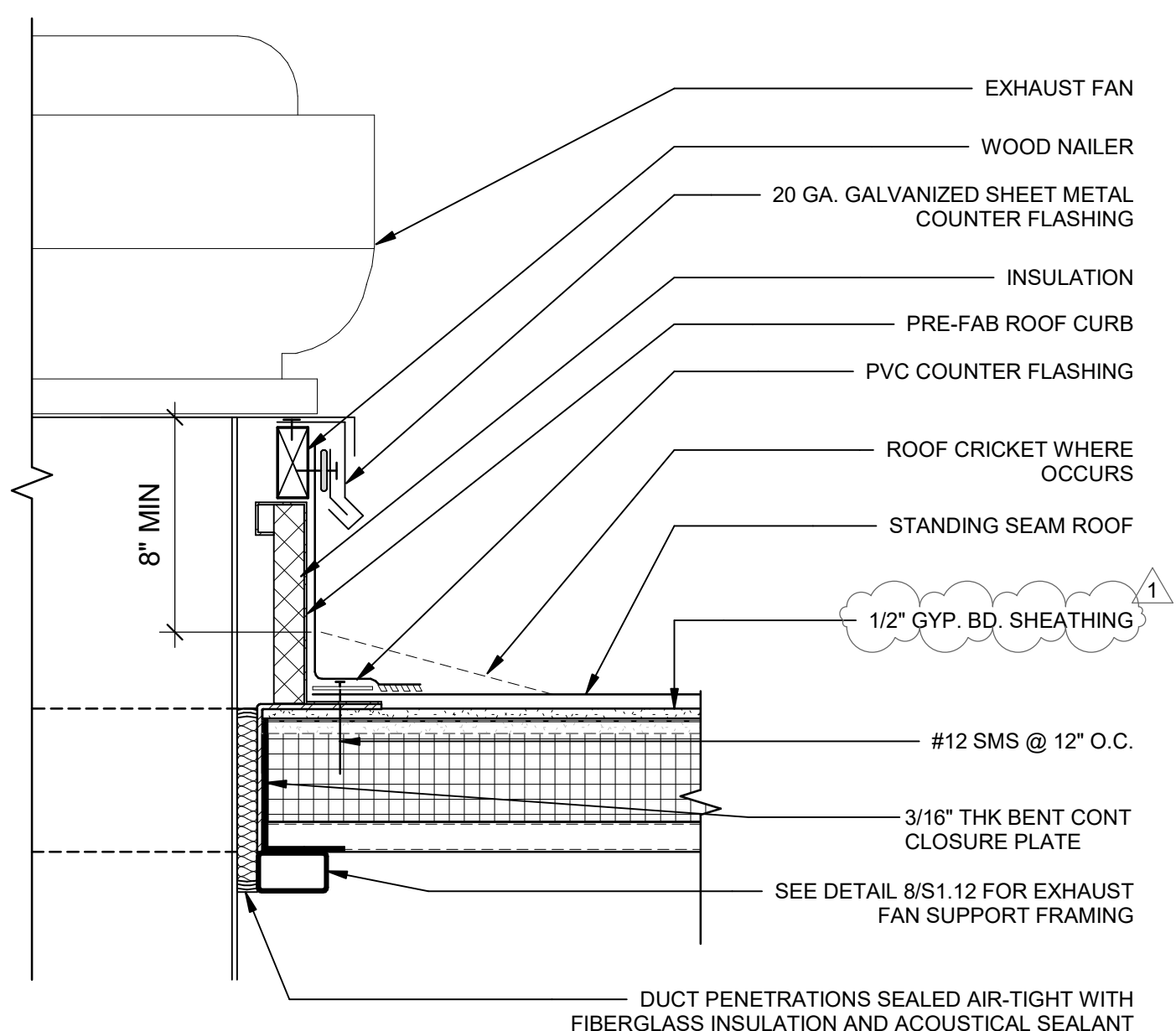


NOTES:  
1. STEEL CLAMPING RINGS SHALL BE USED ON ALL ROOF DRAINS.  
2. OVERFLOW DRAIN SAME AS ROOF DRAIN AND SHARES SAME SUMP RECEIVER. OD TO BE PROVIDED WITH 2" RING FROM MFG.  
3. REFERENCE STRUCTURAL DETAIL 8/S1.11 FOR METAL DECK WITHOUT CONCRETE TOPPING

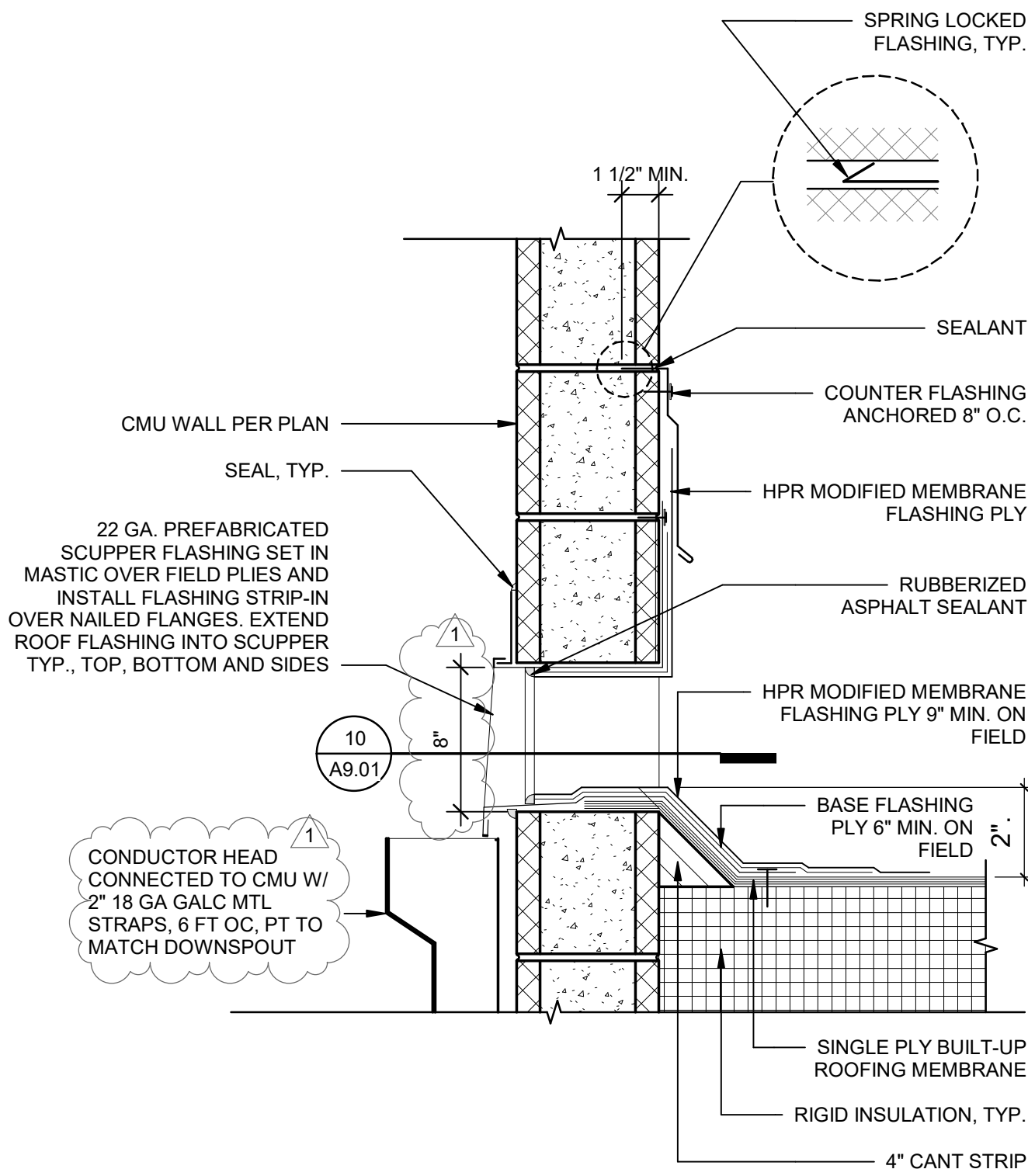
6 ROOF DRAIN  
Scale: 1 1/2" = 1'-0"



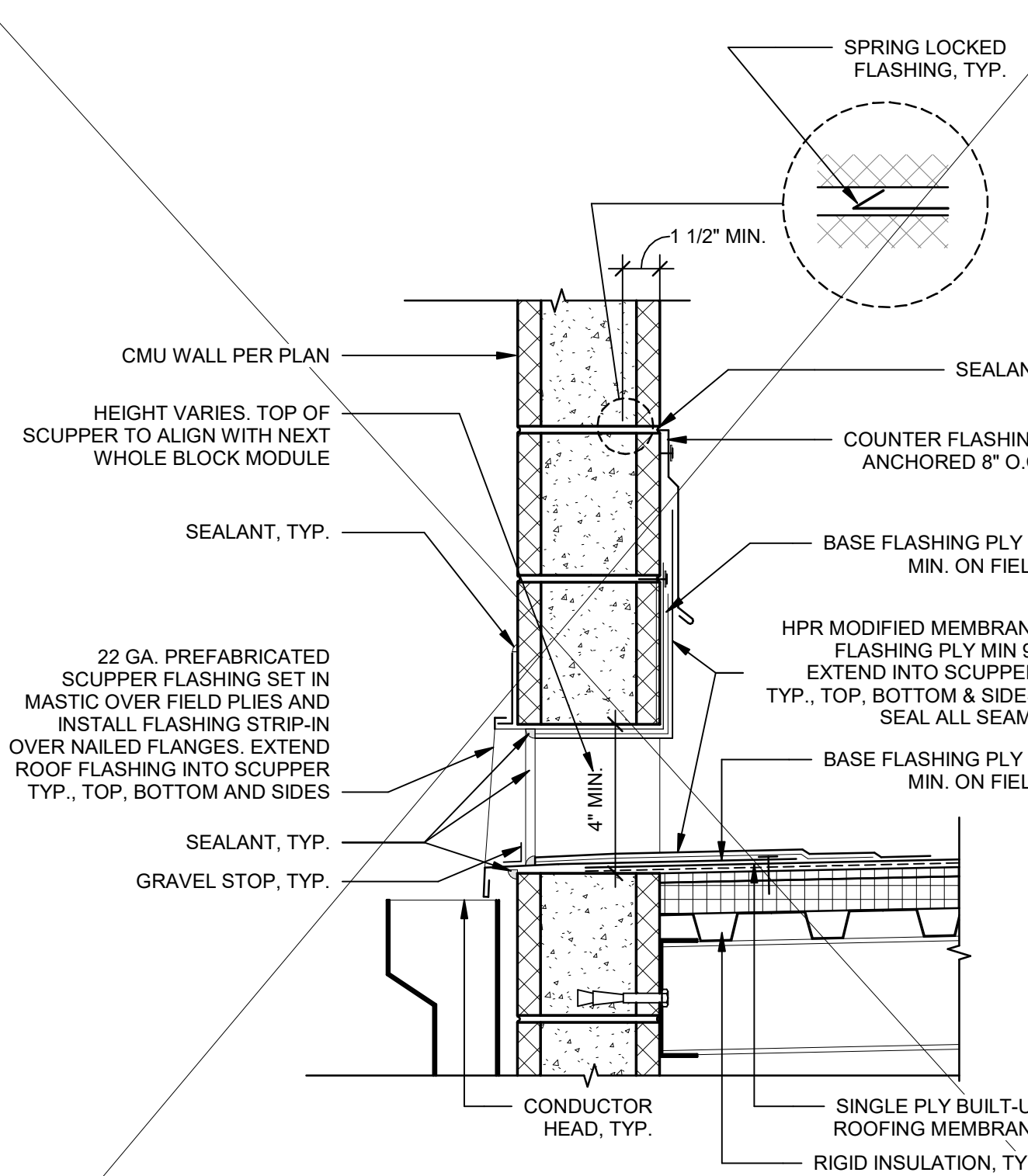
5 PIPE PENETRATION DETAIL @ SINGLE PLY ROOF  
Scale: 1 1/2" = 1'-0"



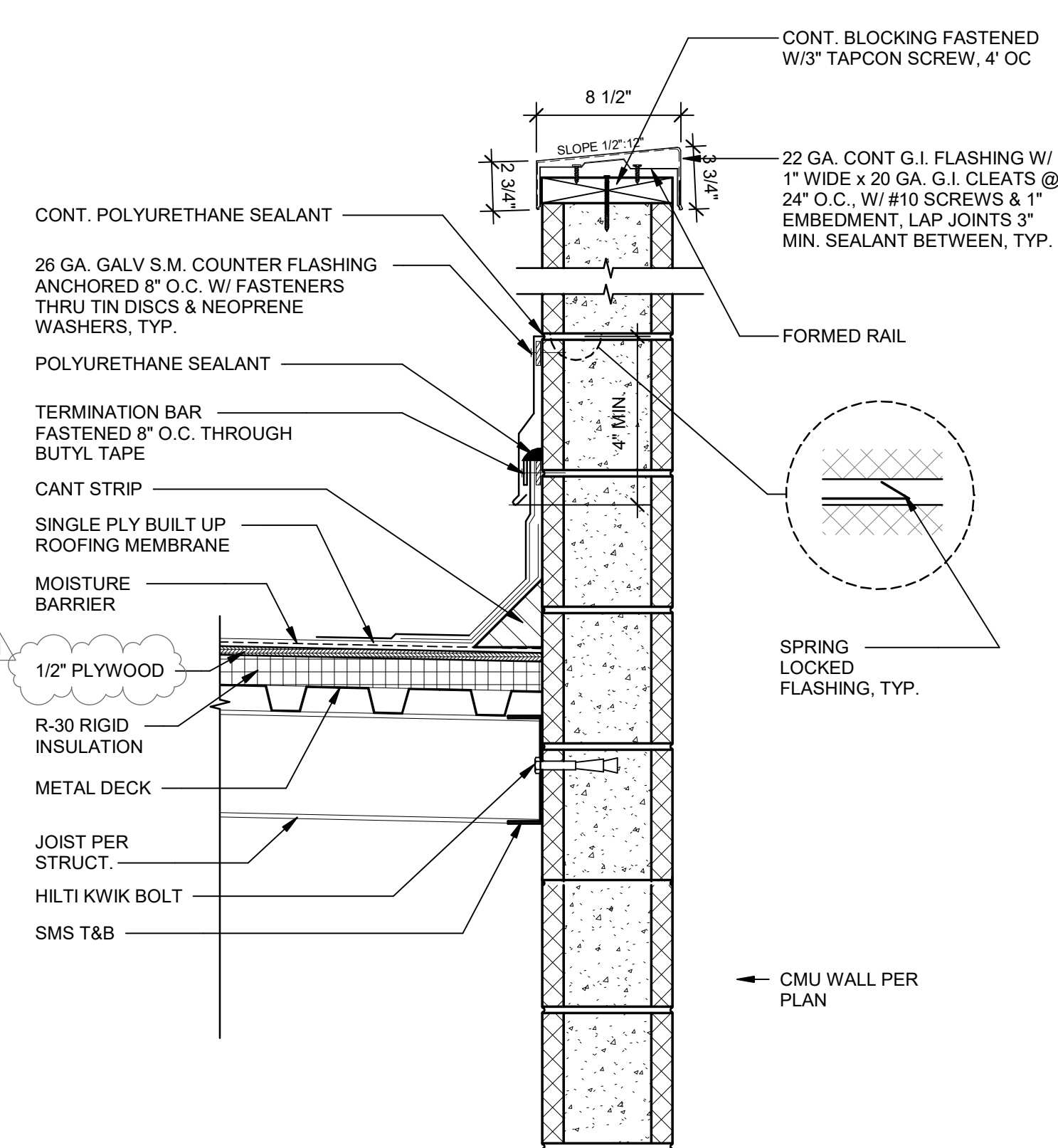
4 EXHAUST FAN CURB @ STANDING SEAM ROOF  
Scale: 1 1/2" = 1'-0"



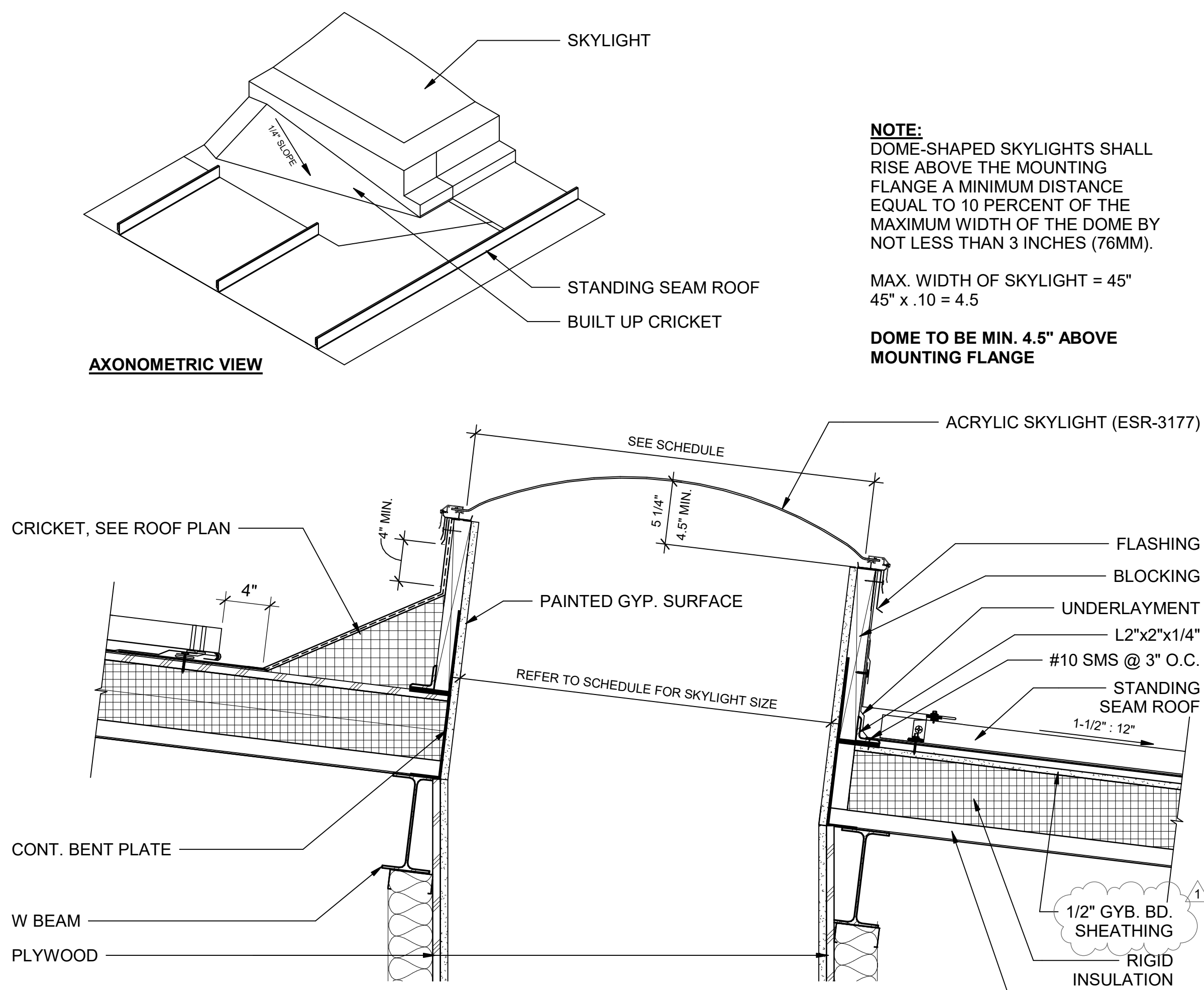
3 OVERFLOW SCUPPER DETAIL  
Scale: 1 1/2" = 1'-0"



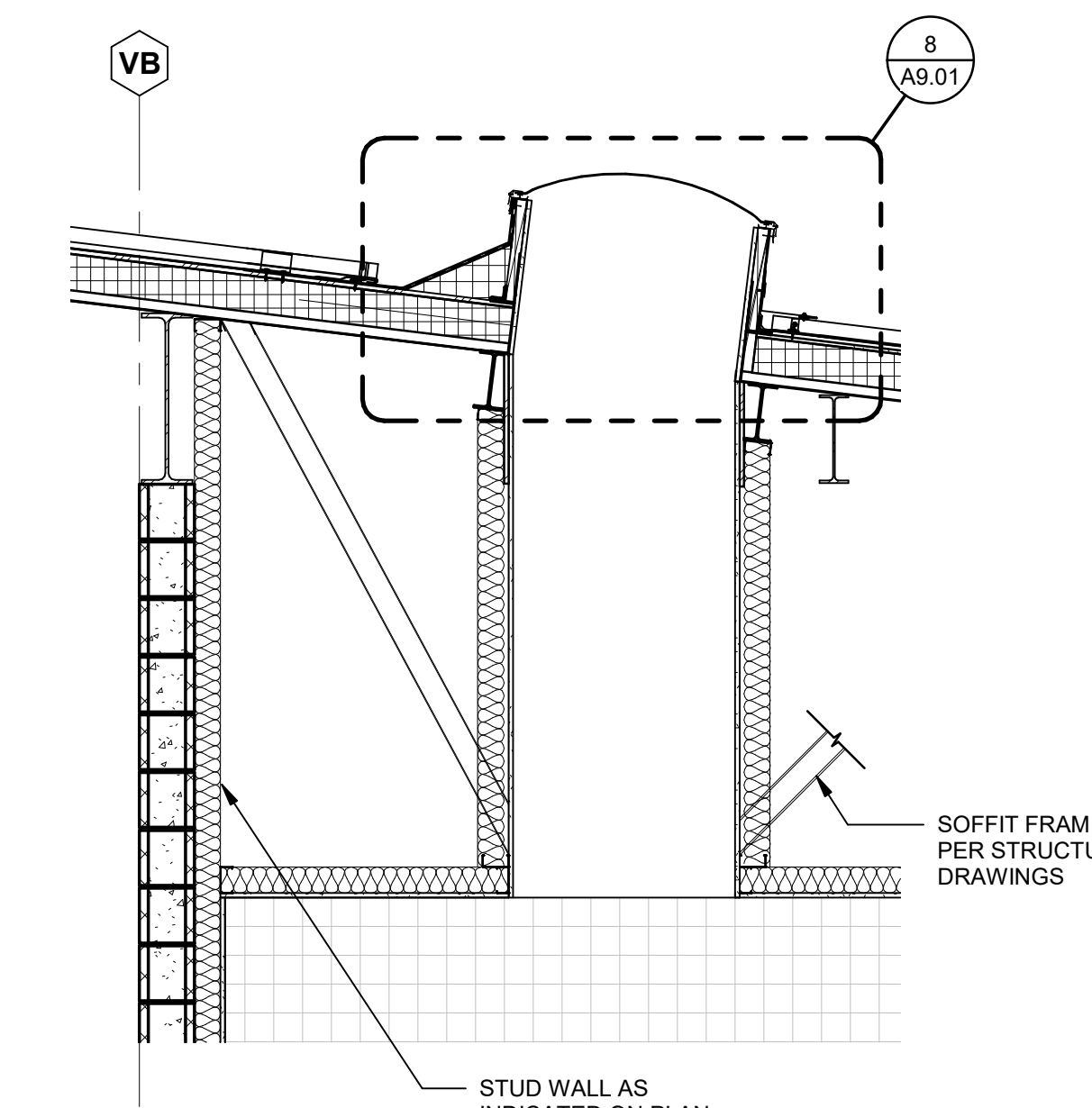
2 PRIMARY SCUPPER DETAIL  
Scale: 1 1/2" = 1'-0"



1 CMU PARAPET  
Scale: 1 1/2" = 1'-0"



8 SKYLIGHT CURB DETAIL  
Scale: 1 1/2" = 1'-0"



7 TYPICAL FIELD HOUSE SOFFIT DETAIL AT SKYLIGHT  
Scale: 1/2" = 1'-0"

REVISIONS		
1	ADDENDUM 1	02/01/2022

THIS APPROVAL IS FOR ITEMS WITHIN CLOUDED AREAS ONLY. FOR OTHER INFORMATION NOT CONTAINED WITHIN CLOUDED AREAS, REFER TO ORIGINAL DSA APPROVED PLANS.

DO NOT USE THESE PLANS AS SUBSTITUTE FOR THE ORIGINAL DSA APPROVED PLANS.



NORWALK LA MIRADA UNIFIED SCHOOL DISTRICT  
LA MIRADA HIGH SCHOOL NEW FOOTBALL STADIUM PROJECT  
13520 ADELEA DRIVE, LA MIRADA, CA 90638

DSA # 03-120551

NAC  
ARCHITECTURE

NAC NO. 161-19015  
DATE 02/01/2022

ADDENDUM 1

ROOF DETAILS

A9.01